

CPS 5887/4 - Map T

117°9'0"E

117°9'36"E

117°10'12"E

21°28'12"S

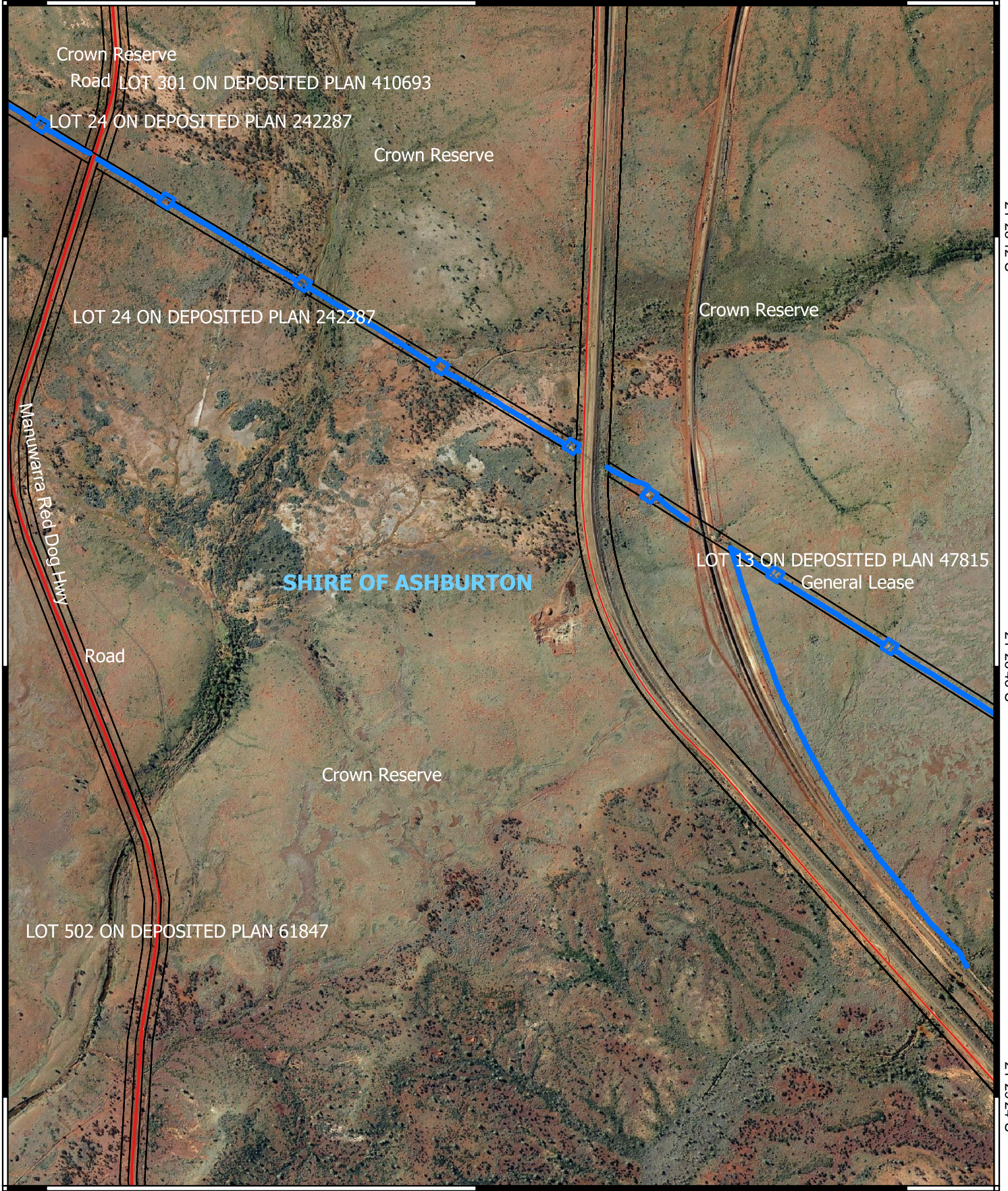
21°28'12"S

21°28'48"S

21°28'48"S

21°29'24"S

21°29'24"S






117°9'0"E

117°9'36"E

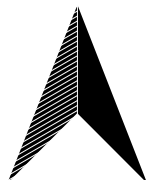
117°10'12"E

Legend

-  CPS areas applied to clear
-  Land Tenure (LGATE_226) - SLIP
-  Local Government Authorities

Roads

-  Main



0 100 200 300 400 m



Projection: GDA 2020

1:10,000



GOVERNMENT OF
WESTERN AUSTRALIA